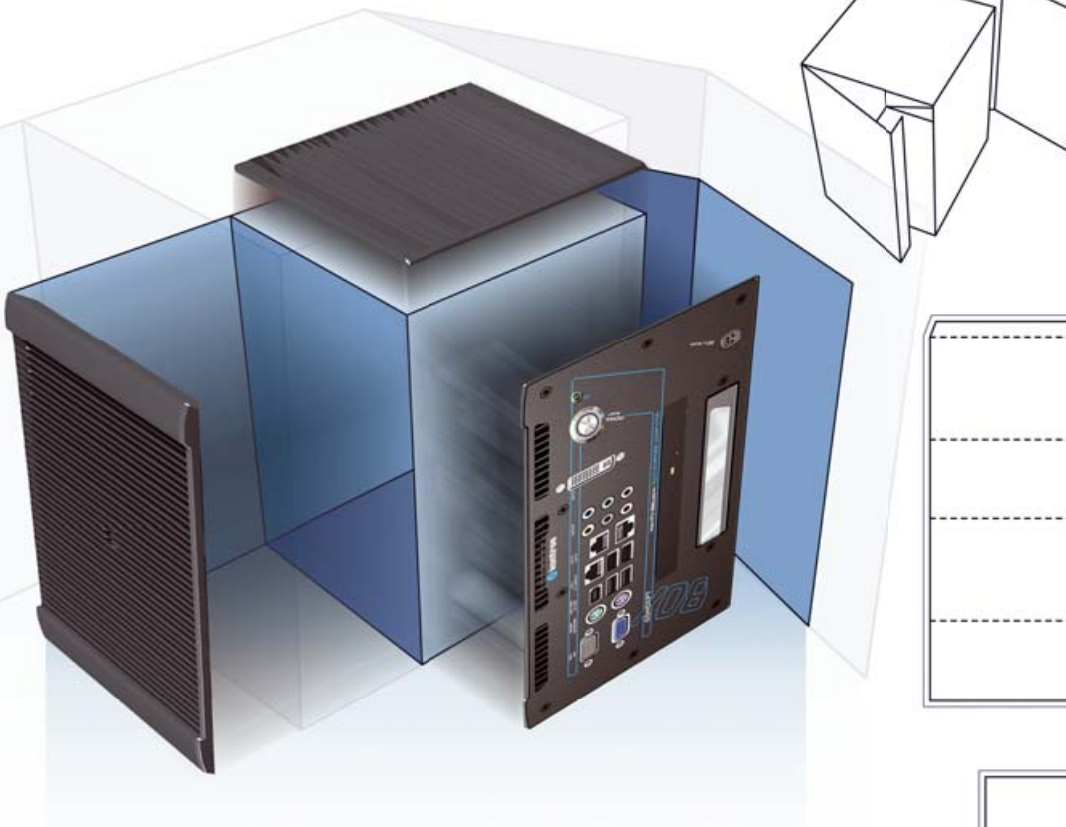


Concept Boxes

2009



- Individual Outlines
- Individual Connectivity
- Individual Configuration
- Fast time to market

Conceived for your Application

Concept Box



Your advantage

- ✓ Within **5 days** 3D Model available
- ✓ Within **5 weeks** after approval of Model, functional prototype
- ✓ Fully tested and certified product **5 weeks** after approval prototypes

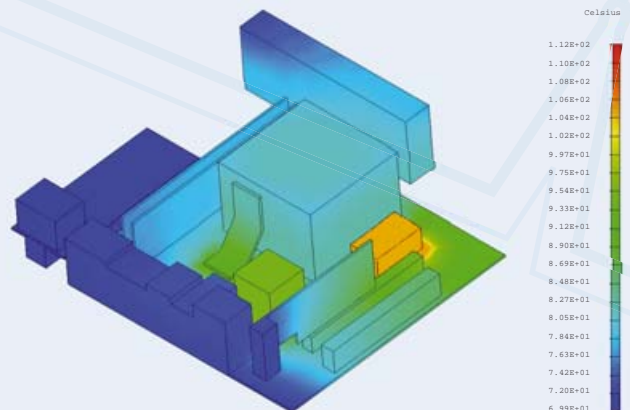


Configure out of predefined elements!

- ✓ Fast **Time to market**
- ✓ Individual **Outlines**
- ✓ Individual **Connectivity**
- ✓ Individual **Configuration**



Thermal Analysis: Just cool





Technical Parameters

- ▶ Up to 50 Grad/C
- ▶ 24 V DC in
- ▶ Atom
- ▶ Core™2Duo
- ▶ Up to 2 expansion slots
- ▶ WLAN optional

Compliance

- ▶ CE compliant
- ▶ Designed to meet UL
- ▶ Shock and Vibration proofed

Full Custom Designs at COTS Prices

Box PCs as OEMs need them

With the Concept Box, Kontron offers a new box PC which combines the variability of a fully custom design with the time-to-market and cost of COTS solutions (Commercial Off-The-Shelf).

In contrast with embedded computer systems, which fit in 19" cabinets, such as 19" industrial servers or modular system solutions based on Compact PCI, ATCA, and Micro TCA, the market in smaller embedded box PCs, used in innumerable industry applications such as automation, medical, POS/POI, electronic signage, gaming, security, and transportation, are not at all standardized in either dimensions or mounting format. In addition, the application areas of box PCs are much too diverse and particularly the requirements for housing dimensions and features sets are much too variable.

The product catalogs of embedded computing manufacturers do contain a variety of box PCs, but what use is the „smallest“ box PC, for instance, if it is two centimeters too wide for the actual application, but leaves a gap in the height and depth? Aside from custom dimensions and mounting formats for optimum installation conditions, the specific feature set of box PCs is also significant: While custom interfaces can be integrated

into larger systems much more easily, additional interfaces in smaller compact box PCs are often a problem, because the housing design is a limiting factor.

OEMs often have the challenge of finding a system among the standard box PCs available on the market which is ideal for their own needs. The result is a higher need for customization, with the associated higher startup costs that entails.

So there is a need for a transparent, modular concept in the box PC arena as well which can offer the flexibility of a custom design with the costs and time-to-market of COTS components. Kontron hopes the concept box will meet that need.

▶ Fast Prototyping

No later than 5 days after sending a specification, the customer is presented with a 3D model, based on which the system design is approved in detail. Within only 5 weeks after completion of the 3D model, the first functional prototypes are available. This is possible for OEM applications for which reasonable unit quantities can be anticipated.

▶ Generating value added

So with the Concept Box, Kontron is building on the need of OEMs for dedicated systems with minimum development time in order

finally to achieve a significant advantage in terms of time-to-market when compared with full custom engineering.

The advantage to the OEM is the fact that the most important components, like the mini-ITX motherboard, as well as the housing and the complete custom system configuration based on standard components all come from the same source, ensuring availability of identical configurations over a longer period of time and thus guaranteeing the best possible reliability for embedded box PC designs.

▶ Premium Services for OEM customers

Kontron's Concept Box is thus a premium strategy offering OEM customers the best possible solutions in terms of technological design and service, from development to EOL management of box PC systems available over long periods, without subjecting those services to unnecessary cost supplements, since the use of standard components means that no costly custom development is needed. And thanks to the electronics fabrication in Malaysia, Kontron is a leader when it comes to cost. In all, the customer thus receives premium products at a standard price.