

The most efficient way to configure and connect devices for enterprise network monitoring

TITAN ENTERPOINT™



Multi-switch management software offering a single, centralized point of control for network monitoring activity

Now featuring enhanced global switch management

Attaining the rigorous “five-nines” uptime standard for production networks doesn’t happen by accident. It results from intelligent planning and vigilant monitoring.

Fortify your network monitoring program by sharing analysis devices electronically via a switching solution – all managed from a single, centralized source called ENTERPOINT.

This web-accessible interface enables users to quickly and efficiently address network issues from any monitoring point on the network without having to leave their workstations.

BENEFITS

- Make efficient use of expensive network monitoring devices
- Share devices instantly across the network from a single, centralized point
- Create and manage network monitoring sessions with just a few clicks
- Generate customized reports detailing device use and network activity
- Manage APCON switch status and maintenance globally

ENTERPOINT™ v2.2

Network Monitoring Made Efficient

Developed by the leader of packet aggregation switching, ENTERPOINT offers four key functionalities required for effective network monitoring programs:

Comprehensive Monitoring Session Control

Switching makes monitoring session connectivity practical, and now ENTERPOINT offers a single intuitive screen from which to control it all. Choose the sources and destinations; add filters, rate and time frame details; and connect. It's that quick and that simple.

Keep command of active monitoring sessions from the dashboard – a screen that displays all relevant monitoring details. Quickly view device, location, user, job ticket and duration details, as well as link status and bandwidth.

Centralized Device Configuration Storage

Build, store and apply device configurations to assure monitoring sessions are evaluating the desired data. Reset devices automatically to defaults once monitoring is complete.

Network-Wide Device Connectivity

Keep a pulse on active monitoring sessions from the dashboard or an Outlook-style calendar. Review, update and disconnect sessions all in a few clicks. Actively manage bandwidth to avoid oversubscription.

Precise, Timely Reporting

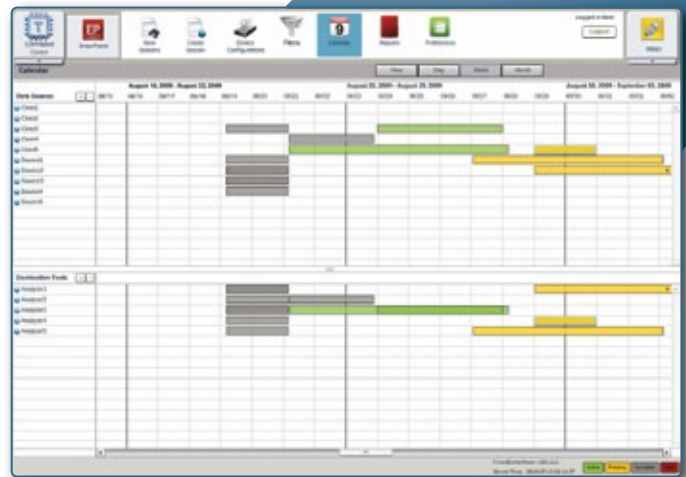
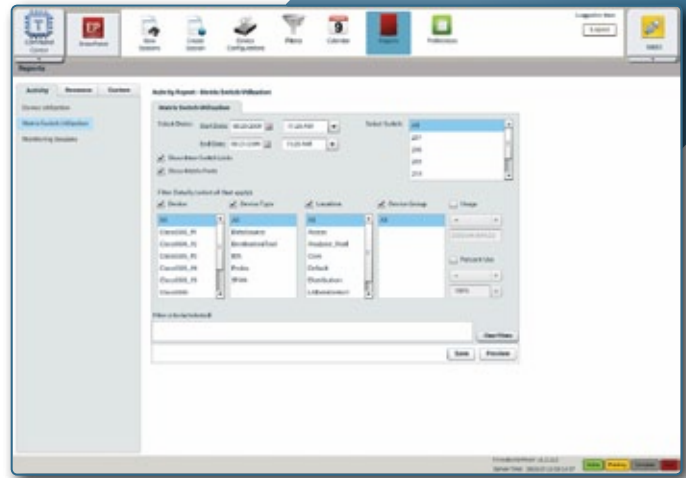
Does it feel like monitoring devices are always maxed out? Find out for sure with ENTERPOINT's activity and resource reporting. Stock reports include device utilization, user activity and inventories.

GLOBAL SWITCH MANAGEMENT

Users can monitor the status of all APCON switches globally from the main ENTERPOINT screen.

If a switch's status changes, the user is alerted and can quickly access a drop-down pane to determine which unit is experiencing issues. Clicking on that switch allows the user to begin troubleshooting the issue.

Users can also perform critical switch-level maintenance within the ENTERPOINT interface. Maintenance items such as running back-ups, restoring settings, and upgrading software for every switch in the network is quick and easy.



FEATURES

- Intuitive software designed for creating and managing network monitoring sessions
- Connect network monitor points to analysis devices with just a few mouse clicks
- Secure, remote access 24x7x365 via standard web browsers
- Eliminates installation of desktop software
- Provides ability to manage an entire inventory of matrix switches from a single screen
- ENTERPOINT is part of the TITAN family of multi-switch management interfaces

