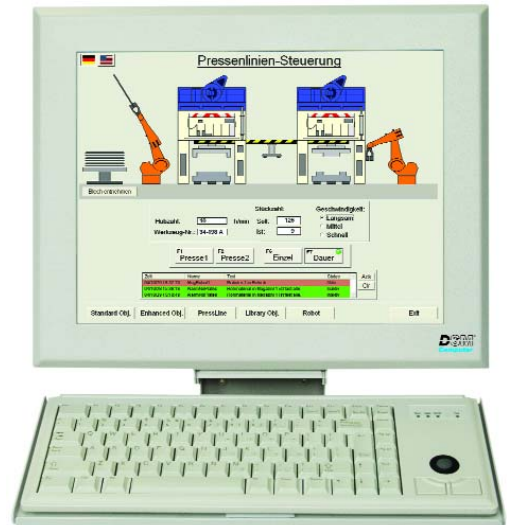


DSM Infinity® Panel System P5

Order No.: 96M9335



with or without keyboard tray available

Technical Specifications

TFT

- 15" Color, max. 1024 x 768, 250 cd/m²
- optional Touch Screen ELO AccuTouch

CPU

- Intel® Celeron® M (ULV) 1.0 GHz Processor, **Fanless**

Memory

- 256 MB DDR RAM incl., opt. up to 1 GB

Chipset

- Intel® 82855GME, Front Side Bus 400 MHz

VGA

- Intel® Extreme Graphics 2 VGA
- 64 MB shared memory, MPEG2-Decoder

LAN Controller

- Intel® 82540EM Gigabit Ethernet controller, 10/100/1000 Base-T/TX, full duplex, RJ45 port
- Realtek RTL8139C Ethernet controller, 10/100 Base-T/TX, full duplex, RJ45 port
- opt. Wireless LAN 802.11b/g

Compact Flash

- opt. Compact Flash Socket, Typ II

Mini-PCI

- 1 x Mini-PCI slot (int.), Typ B, 32 bit, 33 MHz

Watch-Dog Timer

- 1 to 255-second/minute timeout interval

Connectors

- 2 x USB, 2 x LAN, 2 x PS/2, 2 x serial

Drives

- Drive Bays: 1 x 3.5" and 1 x 5.25" (Slimline)
- incl. 40 GB 2.5" EIDE Harddisk (or larger)
- opt. CD/DVD-ROM Drive, Slimline
- opt. 3.5" Floppy Disk Drive, Slimline



Case

- Solid, high-quality industrial case
- VESA screw thread (75x75)
- in all RAL and RSC color available
- on request also with your corporate logo

opt. keyboard tray

Environment

- Storage Temperatures: -20° ~ 70°C
- Operating Temperatures: 0° ~ 40°C
- Relative Humidity: 10% ~ 90%, non-condensing

Dimensions

- WxDxH: 386 x 95 x 310 mm

Power supply

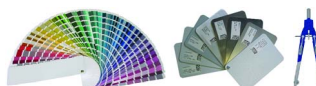
- 100-240 Volt AC
- opt. 24 Volt DC

1 year Warranty

48-hour Burn-In

CE Certification

Custom configurations on request !



DSM[®]
Computer

DSM Computer AG

Am Loferfeld 54
81249 Munich, Germany
Tel.: +49 (0)89-15798-250
Fax: +49 (0)89-15798-196
www.DSM.AG
info@DSM.AG

Layout for 96M9335

